

# CERTIFICATE OF LOCATION OF GOVERNMENT CORNER

EAST QUARTER \_\_\_\_\_ Corner of Section 23, Township 106N, Range 42W

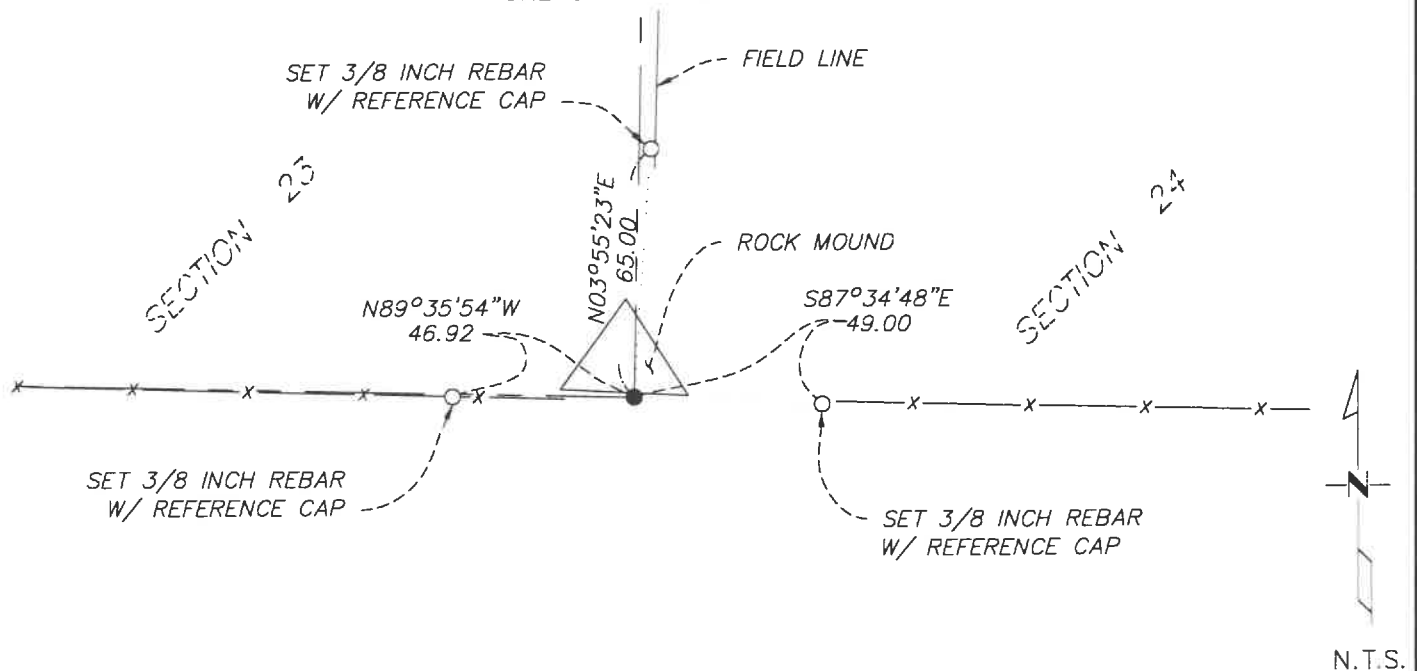
5th Principal Meridian; State of Minnesota, County of Murray.

At the corner location shown on the sketch:

- ☐ On \_\_\_\_\_ found a \_\_\_\_\_  
DATE \_\_\_\_\_
- ☐ left monument as found      ☐ lowered monument      ☐ removed monument (explain)
- ☒ On 6/7/17 placed SET 1/2" REBAR WITH CAP LS 50840  
DATE \_\_\_\_\_

HORIZONTAL DATUM IS NAD83 MINNESOTA STATE PLANE SOUTH

SKETCH OF REFERENCE TIES



Statement of evidence for this corner location is on back of this page.

I hereby certify that this document was researched and prepared by me or under my direct supervision and that I am a licensed Land Surveyor under the laws of the State of Minnesota.

Signature \_\_\_\_\_

Date 06/17/2024 License No. 50840

Title:

- ☒ Land Surveyor      ☐ Professional Engineer  
☐ County Surveyor      ☐ County Engineer

OFFICE OF THE COUNTY RECORDER

County of Murray

I hereby certify that this document was filed in the Co.

**JUN 20 2024**

Recorder's office at \_\_\_\_\_ M. on the \_\_\_\_\_ day of \_\_\_\_\_ A.D. 20\_\_\_\_

County Recorder Karen Bern

by \_\_\_\_\_ Deputy

DOCUMENT NO. \_\_\_\_\_

## STATEMENT OF EVIDENCE

East quarter corner Section 23, T.106N, R.42W.

Quarter section corner common to Section 23 & 24, T.106N, R.42W.

1866 G.L.O. notes indicate a post was set in a mound.

2017 In June a crew with Westwood Professional Services, searched for evidence of this corner finding no remnants of the original corner. The NE corner, fence line occupation west and east of the East Quarter corner, and road occupation at the SE corner was used to establish this corner.